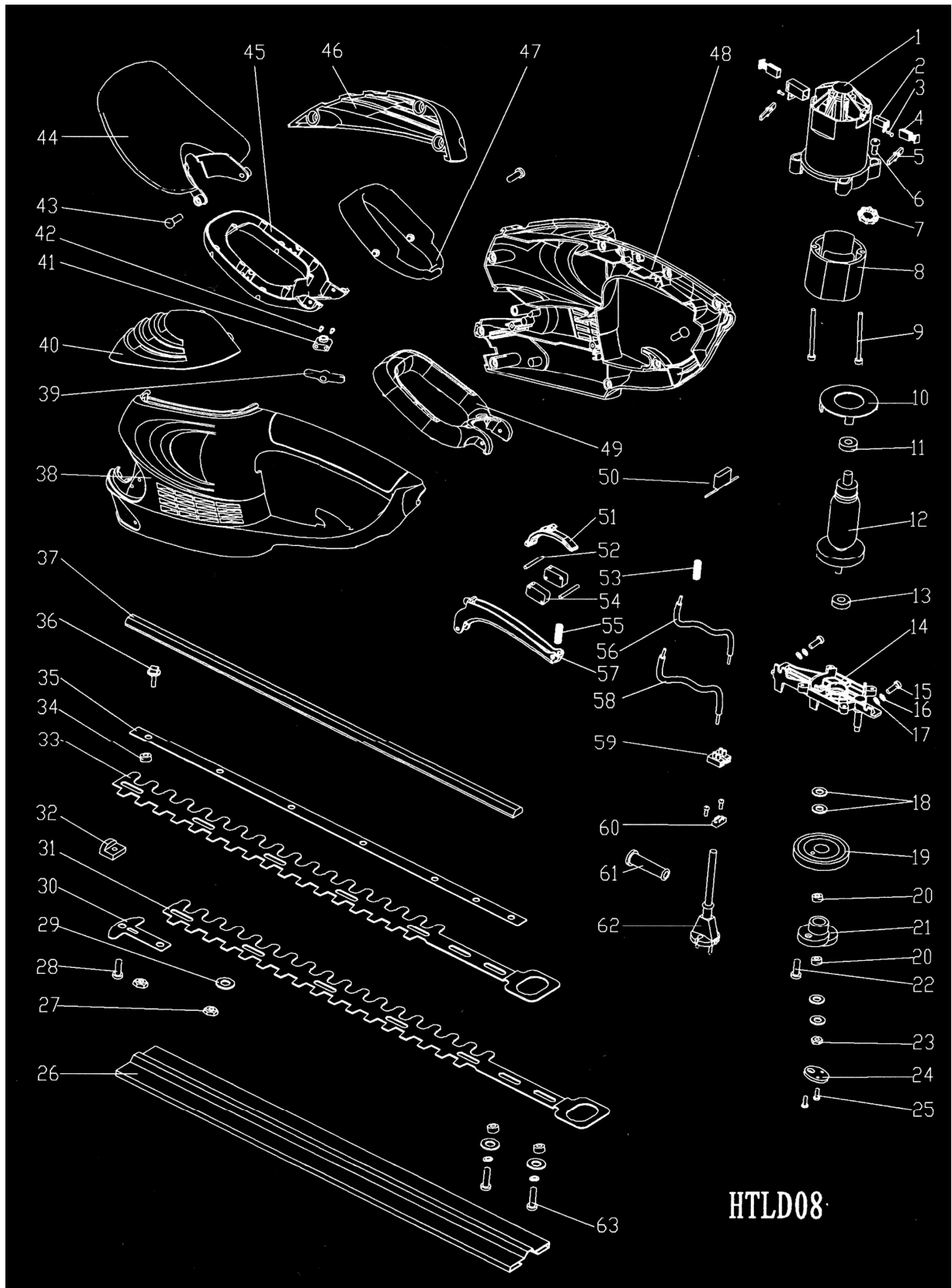


HEDGE TRIMMER 580W



580 W

NO.	Part Name		NO.	Part Name	
1	Motor cover		33	Upper blade	
2	Carbon brush holder		34	Liner ring	
3	Screw ST3X8		35	Liner bar	
4	Carbon brush		36	Square head screw	
5	Insert shim		37	plastic blade press bar	
6	Screw M4X16		38	Left house	
7	Inductor		39	Mover level	
8	Stator		40	Left house cover	
9	Screw ST4X58		41	Soft shaft fixed seat	
10	Wind against ring		42	Screw ST3X25	
11	Bearing 607		43	Screw ST4X16	
12	Rotor		44	Safety guard	
13	Bearing 608		45	Front handle lower support	
14	Central support		46	Right house cover	
15	Screw ST5X20		47	Front handle	
16	Spring washer $\phi 5$		48	Right house	
17	Plane washer $\phi 5$		49	Front handle upper support	
18	Driven gear washer shim		50	Capacitor	
19	Gear		51	Mover level	
20	0808 needle bearing		52	Position pin	
21	Eccentric block		53	Soft shaft spring	
22	Head-sunk pin $\phi 5$		54	Switch	
23	Nut M6X1		55	Rear handle spring	
24	Cover on eccentric block		56	Soft shaft	
25	Screw M5X8		57	Rear handle press button	
26	Blade sheath		58	Inner wire	
27	Nut M5		59	Connect pole	
28	Screw ST4X12		60	Press board	
29	Washer for blade		61	Cable sheath	
30	Blade head protection		62	Cable and plug	
31	Lower blade		63	Screw M5X28	
32	Press bar block				